



LSI PORTSMOUTH



LEARN • SUCCEED • INSPIRE

English Courses for Adults

IELTS Preparation
Cambridge Exam Preparation
Full-time General English
General English plus Business English

Welcome To LSI Portsmouth

Here at LSI Portsmouth our mission is to be the best English language school that we can be and to give our students the best experience they can have in every aspect of their stay. We want all our students to have fun, be happy and most of all enjoy learning English!

Portsmouth is a great city for students and we are in the heart of the university area, with lots of cafés, shops, theatres, pubs, live music venues and restaurants full of British and overseas students. Our students can join the university union sports clubs and societies, which is a great way to make British friends and really get a taste of UK student life. Portsmouth is also a seaside city with miles of beaches. You can even see the sea and the Isle of Wight from many of our classrooms on the higher floors!

Founded in 1985, LSI is a large, independently-managed school with a reputation for academic excellence and putting students' needs first. We believe in giving our students personal care and attention and have created a friendly, welcoming and supportive atmosphere throughout the school. We also believe in helping students to achieve

their goals, each one unique, and will do all we can to help make these goals a reality.

Our teachers give students a teaching programme to suit their individual academic needs and make learning fun and stimulating. Outside of the classroom, we have a dedicated social programme organiser who will introduce students to our waterfront city and to many other interesting places within easy reach of Portsmouth.

We look forward to welcoming you into our LSI family and to our historic and lively university city by the sea!

Best wishes

Andrew

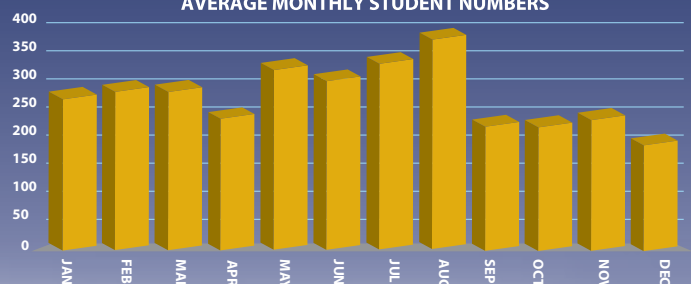
Andrew Edwards
MA PGCE Cert. TESOL
Principal



SCHOOL FACTS

Minimum age:.....	18
Average age on General English courses:.....	23
Maximum number of students:	400
Average weekly number of students:	230
Number of nationalities annually:.....	50
Average number of nationalities:	35

AVERAGE MONTHLY STUDENT NUMBERS



Our School

Our Teaching Approach

Our teachers try to make learning fun and enjoyable as well as helping you to reach your academic goals. Over the years, LSI has developed a substantial resource of in-house materials of which we are especially proud and our teachers try to keep learning activities as varied and as stimulating as possible. Two of our teachers are even published authors of IELTS and Business English books.



Our Facilities

- 55 well-equipped classrooms
- Interactive White Boards in our larger classrooms
- 2 student lounges (for General English and Executive students)
- General English lounge with sofas, comfortable chairs, large widescreen TV, piano, table tennis and pool table
- Cafeteria selling hot and cold food, drinks and snacks at reasonable prices daily
- Self-study centre with computers
- Free internet and WiFi throughout the building



Your English Level

LSI LEVEL (CEF*)	Can do	IELTS level	Cambridge Exam
Advanced (C2)	Understand native speakers extremely well Communicate ideas and opinions with considerable clarity	7.5 – 9	CPE Certificate of Proficiency in English
Pre-Advanced (C1)	Understand familiar registers of spoken English even at sustained levels of discourse Communicate on a wide range of subjects effectively	6.5 – 7	CAE Certificate of Advanced English
Upper-Intermediate (B2)	Understand native speakers in stock or job-related situations Communicate adequately in a range of situations	5.5 – 6	FCE First Certificate In English
Intermediate (B1 - B2)	Understand familiar and simple texts competently Can communicate adequately in most everyday situations	4.5 – 5	
Lower-Intermediate (B1)	Understand the main points of clear standard input on familiar matters Sustain dialogues on topics which are familiar or of personal interest Understand basic notices, instructions or information	4 – 4.5	
Elementary (A1 - A2)	Interact in a simple way and describe in simple terms aspects of his/her background	3 – 3.5	
Beginner (A1)	Initially a non-user of English, working towards being able to understand and use correctly simple words or stock phrases	2	

*Common European Framework

Progress – on average, students tend to complete an LSI level (e.g. Intermediate) approximately every 12 weeks

It may be necessary for a student to follow a General English course before progressing to an exam course. Minimum levels are required for exam courses.

1 IELTS Preparation

Our IELTS course is an intensive preparation course which aims to provide you with the skills you need for the Cambridge IELTS exam. We understand the time pressures you may have and our intensive programme has been designed with this in mind.

- Focus on all the skills required for the exam, as well as specific areas of grammar and vocabulary necessary for IELTS
- Learn different exam techniques through a range of activities
- Dynamic lessons to keep you motivated and encourage maximum progress
- All course books and materials are included in the fees (exam fees are not included)



- Our IELTS course manager is a published IELTS author and teacher trainer
- Regular practice exams to help you measure progress and identify areas for improvement
- Daily homework to consolidate the lesson
- Detailed feedback on your written work
- A wide selection of self-access material to help you progress quickly
- LSI is a British Council-approved IELTS test centre and you can take your exam with us if you will not need the certificate for UK visa purposes. There are many exam dates to choose from allowing you to take the exam in an environment where you feel comfortable



“The professional teachers are so lovely and the class atmosphere is very lively”

Jeong Jong Wok,
Korea

FACT CHECK

- Minimum age: 18 • Average age: 23
- Maximum class size: 12
- 22.5 hours (60 minutes) per week, plus 5-10 hours self-access
- Start any Monday • Minimum 4 weeks
- Minimum level: lower intermediate

8:30 - 9:15	9:15 - 10:30	10:30 - 10:45	10:45 - 12:00	12:00 - 1:15	1:15 - 2:30	2:30 - 2:45	2.45 - 4:00	4:00 - 5:30
Optional self-access	Grammar/ Speaking/ Listening/ Pronunciation	Morning coffee break	Grammar/ Speaking/ Listening/ Pronunciation	Lunch/ Optional supervised self-access	Reading/ Vocabulary/ Exam Skills	Afternoon coffee break	Writing/ Vocabulary/ Exam Skills	Optional supervised self-access

No lessons on Friday afternoons leaving students free to do supervised self-access study. Alternatively students can choose this time to do 1:1 classes (at extra cost). Exact starting and finishing times may change, but there will always be 22.5 hours of taught classes per week (except where there is a public holiday)

2 Cambridge Exam Preparation

Our full-time Cambridge exam preparation courses are designed specifically to help you learn and improve the language skills necessary to get the best possible grade in your chosen exam, but also to improve the general level of your English in all areas of communications.

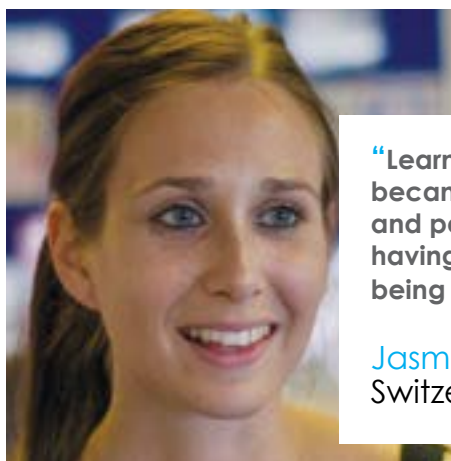
- Courses focus on the Cambridge syllabus by following Cambridge exam course books
- Teachers incorporate a wide range of other materials and activities appropriate to the level and aims of the lessons
- First Certificate (FCE), Advanced (CAE) and Proficiency (CPE) preparation offered throughout the year. There is no CPE exam in August although the summer CPE course will still run
- Self-study centre fully resourced with lots of Cambridge exam practice materials



- All course books and materials are included in the fees (exam fees are not included)
- Complete course is recommended but students may join for a minimum of 2 weeks if suitable
- Cambridge exam classes are also open to non-exam students studying at that level
- Speaking exams take place in the 2 weeks leading up to the exam date
- Mock exams take place approximately 3 weeks before the exam
- Accredited exam centre within easy walking distance of school

FACT CHECK

- Minimum age: 18 • Average age: 23
- Maximum class size: 12
- 22.5 hours (60 minutes) per week, plus 5-10 hours self-access
- Start any Monday • Minimum 2 weeks
- FCE, CAE, CPE



“Learning English became a real pleasure and passion without having the feeling of being at school”

Jasmin,
Switzerland

8:30 - 9:15	9:15 - 10:30	10:30 - 10:45	10:45 - 12:00	12:00 - 1:15	1:15 - 2:30	2:30 - 2:45	2.45 - 4:00	4:00 - 5:30
Optional self-access	Grammar/ Speaking/ Listening/ Pronunciation	Morning coffee break	Grammar/ Speaking/ Listening/ Pronunciation	Lunch/ Optional supervised self-access	Reading/ Vocabulary/ Exam Skills	Afternoon coffee break	Writing/ Vocabulary/ Exam Skills	Optional supervised self-access

No lessons on Friday afternoons leaving students free to do supervised self-access study. Alternatively students can choose this time to do 1:1 classes (at extra cost). Exact starting and finishing times may change, but there will always be 22.5 hours of taught classes per week (except where there is a public holiday)

3 Full-Time General English

Our full-time General English course focuses primarily on grammar in the morning classes and skills (speaking, listening, reading, writing) in the afternoon classes. Throughout the day you will also have the opportunity to widen your vocabulary and improve your pronunciation.

- The main focus is on communication with plenty of opportunity to practise using new grammar and vocabulary
- Lessons are dynamic with a variety of activities
- We encourage pair-work and discussion to improve fluency and confidence
- All course books and materials are included in the fees (exam fees are not included)
- A test at least every 2 weeks and regular homework so you can monitor your progress



- Focus on grammar and vocabulary extension in the morning, with lots of spoken practice and an opportunity to improve skills
- Focus on English for 'everyday situations' in the first afternoon class, with lots of speaking, listening and pronunciation practice. A chance to learn useful phrases and increase your confidence in real social situations
- Focus on 'everyday themes' in the second afternoon class, with a chance to improve the 4 main skills (reading, writing, listening and speaking) through a variety of multi-media and authentic materials



“You learn a lot of English without getting bored”

Jesus Pereira Quintas, Spain

FACT CHECK

- Minimum age: 18 • Average age: 23
- Maximum class size: 12
- 22.5 hours (60 minutes) per week, plus 5-10 hours self-access
- Start any Monday • Minimum 2 weeks • All levels

8:30 - 9:15	9:15 - 10:30	10:30 - 10:45	10:45 - 12:00	12:00 - 1:15	1:15 - 2:30	2:30 - 2:45	2:45 - 4:00	4:00 - 5:30
Optional self-access	Grammar/ Vocabulary Skills/ Pronunciation	Morning coffee break	Grammar/ Vocabulary Skills/ Pronunciation	Lunch/ Optional supervised self-access	Everyday English functions Everyday English functions	Afternoon coffee break	Everyday English themes Speaking/ Listening	Optional supervised self-access

No lessons on Friday afternoons leaving students free to do supervised self-access study. Alternatively students can choose this time to do 1:1 classes (at extra cost). Exact starting and finishing times may change, but there will always be 22.5 hours of taught classes per week (except where there is a public holiday)

4 General English Plus Business English

This course gives you the opportunity to combine English for day-to-day communication with the specific English skills you need at work.

The General English morning class has many benefits:

- The opportunity to extend your grammar knowledge and practise using it in a communicative way
- The chance to widen your vocabulary and improve your English skills (speaking, listening, reading and writing)
- Lessons are dynamic with a variety of activities
- All course books and materials are included in the fees (exam fees are not included)



In the afternoon classes, you will be in a minigroup of maximum 4 people from different countries in a simulation of a real, multinational context: negotiating, discussing current business issues, socialising, giving presentations, participating in meetings, teleconferencing, etc.

- Communicative, practical English to meet the professional needs of your work
- Experienced teachers, many of whom have real business experience
- Lunch and evening programme to give you the opportunity to practise your socialising skills and improve cultural awareness
- Exclusive Executive coffee lounge for you to use, with free WiFi



FACT CHECK

- **Minimum age: 25** (Students will be 18+ in the General English morning classes)
- **Average age: 32**
- **Maximum class size:**
 - GE morning: 12
 - Business afternoon: 4
- **25 hours (60 minutes) per week plus 5-10 hours self-access**
- **Start any Monday**
- **Minimum 2-week course**
- **Minimum level: lower-intermediate**
- **Business lunch with teachers optional**



“In my opinion, LSI is the best way to combine business experience and business English”

Yves,
Switzerland

8:30 - 9:15	9:15 - 10:30	10:30 - 10:45	10:45 - 12:00	12:00 - 1:15	1:15 - 2:30	2:30 - 2:45	2:45 - 4:00	4:00 - 5:30
Optional self-access	Grammar/ Vocabulary Skills/ Pronunciation	Morning coffee break	Grammar/ Vocabulary Skills/ Pronunciation	Lunch/ Optional supervised self-access	Business Skills	Afternoon coffee break	Business Skills	Optional supervised self-access

This course includes lessons on Friday afternoons. Exact starting and finishing times may change, but there will always be 25 hours of taught classes per week (except where there is a public holiday)

Welcome to Portsmouth

Gunwharf Quays and Spinnaker Tower

Gunwharf Quays is the perfect place to relax after a hard day of studying! It's filled with over 90 designer shopping outlets, bowling alleys, a multi-screen cinema, more than 30 bars, cafés and restaurants such as Jamie Oliver's, as well as popular student nightclubs. All of this is overlooked by the iconic Spinnaker Tower where, from the viewing deck, you can enjoy views across the whole city and the sunset across the sea.



Old Portsmouth

This is the oldest part of the city, known as 'Spice Island', where spices and tobacco first arrived from the New World. This is now the ideal place to try traditional fish and chips while watching ships pass through the harbour. It is also home to the Historic Dockyard, where you can learn all about Portsmouth's rich naval history and visit its three historic ships: HMS Victory, HMS Warrior and the Mary Rose.



Isle of Wight

Best known for music festivals and stunning coastline, the Isle of Wight is just 10 minutes away by hovercraft. This island with beautiful beaches and traditional, unspoilt countryside should not be missed.



Southsea

Southsea is the cultural and social hub of Portsmouth and is where most of our homestay families are located. Southsea Common, a huge park by the sea, is perfect for playing football, enjoying barbecues with friends, walking or jogging by the seaside and is also home to our popular skate park. Southsea also has a 500-year old castle, with a café and restaurant inside, which hosts lots of parties and events throughout the year. Southsea is a unique place, full of cool cafés, independent shops and alternative nightlife.





Entertainment

Portsmouth is a vibrant university city, home to some incredible music festivals and events throughout the year. From free live music throughout summer at the Victorian Bandstand, to Victorious Festival held every August right next to the seaside, there's always something happening here. The nightlife is great in Portsmouth, and with a student population of over 20,000, there are plenty of lively cafés, pubs and nightclubs for you to enjoy. If you prefer something more cultural, there are several concert halls, theatres and a contemporary art gallery, with interesting events all year round.

Seaside and Sunshine

Southsea has miles of pebble beaches and Portsmouth is one of the sunniest places in the UK, so the summer months here are a great time to walk, cycle, run or sit and relax by the seaside and enjoy some sunshine. Many of our students also swim in the sea each summer too!



Location and exploring the UK

Portsmouth is also well-situated to visit London, which is just 90 minutes away by train. Brighton, Bournemouth, Stonehenge, The New Forest and Eastbourne are all easy day trips from here too.

Literary Tradition

Charles Dickens was born in Portsmouth and Conan Doyle wrote his first Sherlock Holmes stories here - come and expand your knowledge of them in one of the city's many museums!

Accommodation

We understand how important it is for you to be happy where you are living while you are studying with us. We will do everything we can to give you the best option to suit your needs and to help and support you with your living arrangements.

Homestay

Staying with a homestay family is the ideal way to improve your English and learn more about British life and culture. All our accommodation is organised by the school and many of our families have been hosting our students for years. There are very few language schools in a city of 200,000, so we have the choice of some of the very best families.

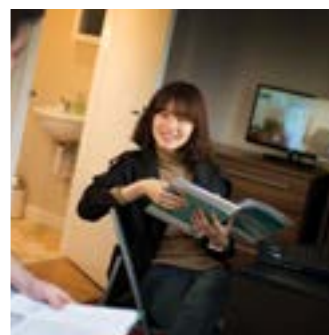
- Single study bedroom (doubles available on request)
- Breakfast and dinner during the week and all meals at weekends
- Bed linen and towels provided
- Laundry done weekly
- Typically between 15 and 30 minutes' walking distance (maximum 45 minutes)
- Portsmouth is completely flat and there are many cycle paths, so getting to school is easy. Many of our students buy second-hand bicycles while they are with us
- We also offer private home accommodation (more than 4 students in one home). There may be less direct contact with the host(s) but the facilities offered will be the same as living with a homestay family.



Self-Catering

If you prefer to be more independent and to cook for yourself, we have self-catering student houses for our students, all within 20 minutes' walking distance of school.

- All rooms are either Superior (with private shower and wash basin, shared toilet) or Full En Suite (at extra cost)
- Fully-furnished single study bedrooms (doubles available for couples on request)
- Kitchens with fridge-freezers, washing machines and tumble dryers
- All cooking pots, pans, crockery and cutlery provided
- Free WiFi
- Bed linen provided (you must bring your own towels)
- Living room/dining rooms with sofas and TV
- Live-in LSI House Manager to look after you and help keep the house organised



Self-catering is very popular, so please book early and check availability before booking.

Social Life at LSI

The School's Social Programme

- Full and varied programme the whole year, organised by our dedicated Social Programme Organiser
- The perfect way to make friends, have fun, see interesting places and enjoy yourself
- Usually one after-school activity every weekday
- An excursion every weekend to places of cultural and historical interest, such as:
 - London
 - Oxford
 - Brighton
 - Stonehenge and Salisbury
 - Cambridge
 - Bath
- A weekly football match with our teachers and students every Monday



University Union Clubs and Societies

We are very lucky that, for a small fee, our students can join the University of Portsmouth union's clubs and societies (www.upsu.net), a great way to make friends with British and overseas students while enjoying your hobbies and interests. Some popular clubs and societies include:

- Hockey – men's and women's clubs
- Football
- HipHop and Drum and Bass societies
- Cinema society
- Surf club

Our students can also join the university gym, use the university union café and bar and join the university social programme and trips.

Typical fortnightly programme (with approximate costs):

	Monday	Tuesday	Wednesday	Thursday	Friday	Saturday
Week 1	Football with the teachers £2	Badminton £3 <i>And/or</i> Meal Out Approx. £10	Conversation Club Free <i>And/or</i> Salsa £4	Visit to Spinnaker Tower £7 <i>And/or</i> Karaoke Free	Art Club Free <i>And/or</i> Volleyball £2	Excursion to Stonehenge & Salisbury £30
Week 2	Football with the teachers £2	Yoga £2 <i>And/or</i> Cinema Night £7	Table Tennis Tournament Free <i>And/or</i> Salsa £4	Ladies' Afternoon Tea Free <i>And/or</i> International Party £4	Volleyball £2 <i>And/or</i> Laser Quest £7	Excursion to London £20

The LSI Job Club

We organise a free Job Club 'Clinic' on Friday afternoons to help you find work, improve your CV, practise your interview techniques, learn the relevant legal information and look at our updated list of recent jobs in Portsmouth. There will be a teacher there to help you – you just have to sign your name on the Job Board in the Student Lounge to participate.

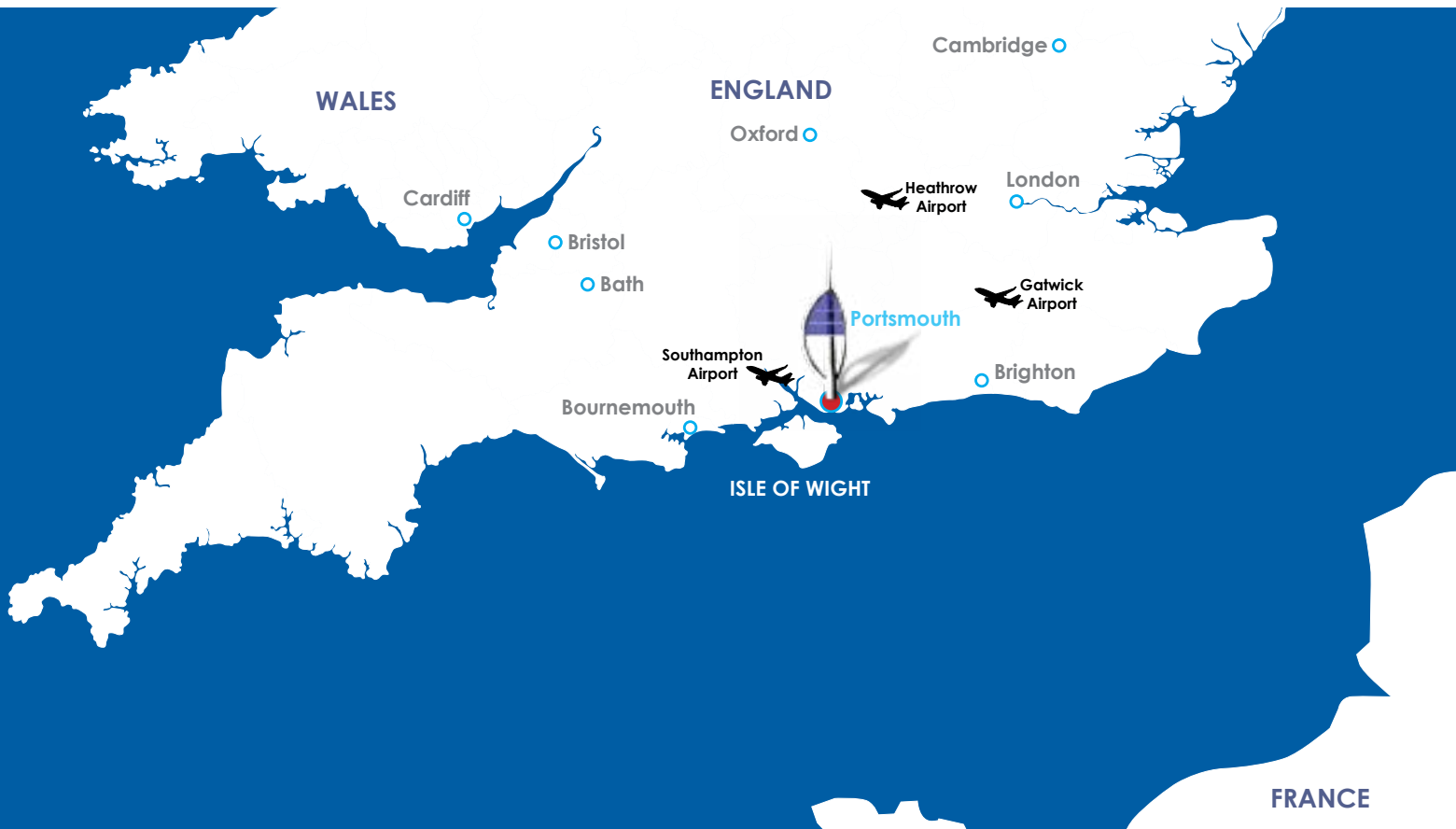
**Please note that only students from the EU, Iceland, Norway, Liechtenstein and Switzerland are permitted to work in the UK (some exceptions may apply; work rights will be stated on your visa stamp).*



Towards the end of her 13-week course, Beatriz from Spain found a job with G! Boutique Hotel. She continued working towards her IELTS exam while working and living at the hotel. Beatriz loved being part of the team at the hotel and not only improved her English but also gained valuable experience for her CV.

LSI PORTSMOUTH

A Centre of Academic Excellence in a Lively University City by the Sea



LANGUAGE SPECIALISTS INTERNATIONAL

1-13 Lord Montgomery Way
Portsmouth, PO1 2AH
Hampshire, United Kingdom

Tel: +442392 291811

Fax: +442392 750435

E-mail: info@lsi-portsmouth.co.uk

www.lsi-portsmouth.co.uk



Don't forget to join us on:

