

Earlscliffe

Summer & Easter  
2021

Situated in the south east of England, Earlscliffe is ideally located for both access to London and to a variety of local attractions.



Earlscliffe is a specialist provider of residential English language and academic preparation programmes for international teenagers. Earlscliffe is based in the coastal town of Folkestone in the county of Kent, 'The Garden of England', close to London and its airports.



Since 2002, Earlscliffe has been running courses for young people from all over the world to come together to learn English in England and gain a better understanding of each other's cultures. We offer a choice of stimulating courses for teenagers from June until mid-August, plus our traditional Easter course for 8–17 year olds each spring.

We are familiar with the need to find a course which strikes the right balance of serious study, fun activities and 'added value'. We focus on delivering high-quality programmes in only one school where we have full control of all aspects of the course. We are delighted that both students and staff return to us year after year to be part of this Earlscliffe family environment. We look forward to welcoming you to Earlscliffe, either as a new student or one of our many returners!

The Earlscliffe team



**Earlscliffe** 29 Shorncliffe Road  
Folkestone, CT20 2NB United Kingdom  
T +44 (0)1303 253951 E [summer@earlscliffe.co.uk](mailto:summer@earlscliffe.co.uk)  
[www.earlscliffe.co.uk](http://www.earlscliffe.co.uk)





## About Earlscliffe

Earlscliffe is an independent sixth form college during the academic year and offers an intimate, highly-personalised environment.

Our academic reputation is high with our A-level results regularly placing us in the top echelon of co-educational boarding schools in the south-east of England. Earlscliffe is proud to be a UNESCO school and is a leading contributor to European collaborative projects.

The Earlscliffe campus is formed of seven Victorian and Edwardian buildings, all recently renovated to provide high-quality teaching and residential facilities. Located in the desirable West End of Folkestone, Earlscliffe is within walking distance of the elegant Leas promenade, the town centre's shops and the high-speed train link to London St Pancras.

### Earlscliffe summer courses

Course title	Global English	Mini-MBA™	Uni-Prep
<b>Ages</b>	13–17 years	15–17 years	16–17 years+
<b>Level of English</b>	Minimum level = Lower Intermediate (A2)	Minimum level = Upper Intermediate (B2+)	Minimum level = Upper Intermediate (B2+)
<b>English level test</b>	An English level test may be required before arrival for B2+ courses		
<b>Length of course</b>	2–7 weeks. It is possible to book more than one course – e.g. Global English for 2 weeks followed by Mini MBA™		
<b>Total number of students</b>	Maximum 100		
<b>Lessons per week</b>	22 hours per week (22 x 60 minute lessons)		
<b>Class size</b>	Maximum 12		
<b>Accommodation</b>	All rooms have private bathrooms and are recently renovated; 2–3 students sharing per room. Single rooms available at extra cost		
<b>Excursions</b>	2 day trips per week including London, cinema, ten-pin bowling, laser tag and shopping trips		
<b>Special features</b>	Two debates each week	Visit to the Bank of England Museum	Visits to universities in London and Oxford
<b>Extra options</b>	Paintball, London Musical, Warner Bros Harry Potter™ Studios trip. 4 hours English tuition in small groups or one-to-one English tuition		
<b>Airport transfers</b>	Transfers are included in the course fees for flights scheduled to arrive and depart between 9am–4pm.* Arrival and departure days are Saturdays except for 27 June (Sunday). Visit <a href="http://summer.earlscliffe.co.uk">summer.earlscliffe.co.uk</a> for out-of-hours and Unaccompanied Minor transfer prices		
<b>Travel insurance</b>	Student travel insurance is included in the price		
<b>What's included</b>	All accommodation, meals, lessons, sports, activities and events, excursions including admissions costs, Wi-Fi, weekly laundry service, travel insurance, airport transfers*, Earlscliffe water bottle and T-shirt		

\*visit [summer.earlscliffe.co.uk](http://summer.earlscliffe.co.uk) for details

# The trips

Earlscliffe offers day trips on Wednesdays and Sundays, half-day visits to Ashford Designer Outlet or Folkestone on Saturday afternoons, and evening bowling, laser tag or cinema trips. Earlscliffe is well-located, within comfortable travelling distance of London and the many cultural destinations in Kent and Sussex. All trips are supervised and students are given a pre-trip briefing.

An Earlscliffe highlight is our weekly trip to London (Capital Wednesday™) when over the course of the summer we visit many of the following famous London landmarks: the Tate Modern; the London Dungeon; the London Eye; the Natural History Museum; St Paul's Cathedral; the Tower of London; the V&A; the British Museum and Buckingham Palace.

On Capital Wednesdays™ we use the direct high-speed train from nearby Folkestone Central station which has a journey time of 55 minutes. Our Mini-MBA™ students also visit the Bank of England Museum. Uni-Prep students will also visit universities in London and Oxford.

On Sundays we may visit: the world-famous cathedral city of Canterbury and take a river boat tour; Leeds Castle and Bluewater shopping centre; Thorpe Park theme park, Margate and Dreamland; ice-skating and Hastings, including Adventure Golf.

One of our day trips is to an outdoor activities centre for mountain biking, den-building and other team-bonding exercises. Students will be given some free time in small groups on trips.



# Our activities

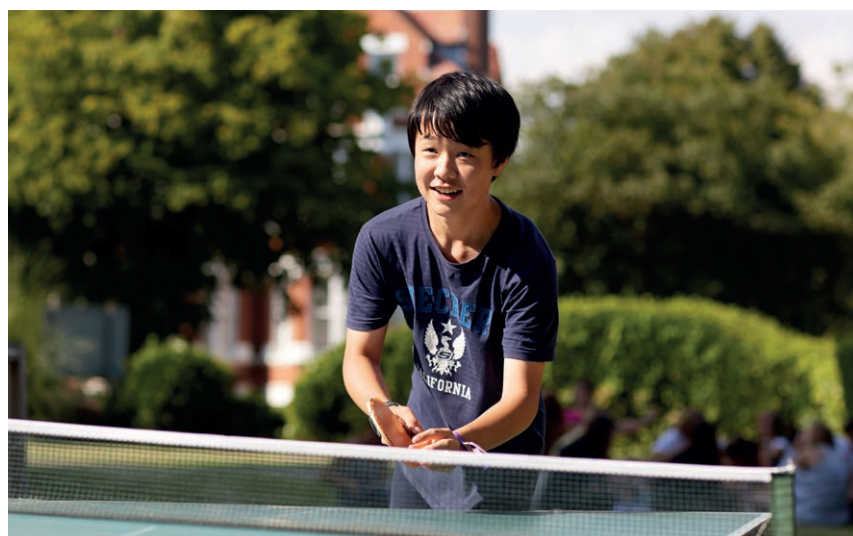
Earlscliffe offers a balance of sports, cultural events, arts and crafts, fun games, walks and competitions, so there is something for everyone on the programme. Our staff organise and supervise all these activities after the day's lessons have finished.

Students play volleyball, basketball, badminton, billiards and table tennis on-site. Our supervised afternoon and evening activities include karaoke nights; football; softball; 'Earlscliffe's Got Talent'; swimming; themed disco nights; tennis; rounders; 'Jeux sans Frontières' and quiz nights, to name just a few.

Regular daytime and evening beach trips are a popular part of the week's activities.

We are fortunate to be close to Folkestone's town centre and its shops, the artistic Creative Quarter and the beach, all of which offer our students moments of discovery and relaxation.

We use the excellent facilities provided at the Three Hills and Folkestone sports centres.



# Rooms and meals

Earlscliffe does not use host families. All students live in our own, supervised residences which are located within a few minutes' walk of both the main building and the school house classrooms. All our buildings were originally built between 1870 and 1910, with four being late Victorian in style and the other three Edwardian. All have recently been refurbished.

Girls and boys live in separate, supervised accommodation. Most rooms are spacious twin or triple rooms and all have en-suite WC and shower. A very small number of single rooms are available. All rooms have Wi-Fi.

The accommodation is attractive: modern, light rooms within historic façades. Earlscliffe is an 'in-town' campus of buildings meaning that students can easily walk between classes, meals, accommodation and activities.

Meals taken in the college dining room and prepared by our own chef are varied and often international, such as Chinese, Mexican or Indian, but not forgetting the occasional British fish and chips! Formal dinners every two weeks give our students a chance to dress up and enjoy a three-course meal by candlelight. Any special dietary needs can be catered for including vegetarian, non-dairy etc. Students are given packed meals on day trips.





# Global English

## Ages 13–17 years

22 hours per week

Minimum English level: A2+

This course is motivational, stimulating and unique. Maximum class size: 12

Global English is designed not only to maximise a student's language development but to do this through using UNESCO's 'Four pillars of learning': learning to know; learning to do; learning to be and learning to live together.

By investigating and discussing global themes using various methods, students improve all four language skills (listening, speaking, reading and writing), their critical thinking skills and indeed both their independent and collaborative learning.

The global themes will excite and extend all abilities, from Glastonbury, climate change and the rights of child refugees to blogging, healthy lifestyles and fashion.

Earlscliffe's Global English programme is truly 'global' in all senses of the word.

### Global English sample week

Saturday	Sunday	Monday	Tuesday	Capital Wednesday™	Thursday	Friday	
Breakfast							
<b>Extra option:</b> Paintball	<b>Thorpe Park theme park</b>	Global Pop Culture project: fashion	Global Society workshop: the environment	<b>High speed train to London</b> The Tate Modern gallery, St Paul's Cathedral and shopping	Global Society: priority areas for UNESCO	Global Pop Culture project: music & festivals	
Morning swim		Global Values forum: well-being	Global Pop Culture project: lifestyles		UNESCO debate preparation	Global Society forum: the economy	
Badminton		Global Values: the role of religion	Topical debate preparation		Trip review	Global Values workshop: the law	
Lunch							
Football		Trip preview	The weekly topical debate		Lunch	The weekly UNESCO debate	
Basketball		<b>Activity sessions</b>	<b>Activity sessions</b>		<b>Activity sessions</b>	<b>Activity sessions</b>	Global Pop Culture presentations
Arts and crafts		Football	Swimming		Visit Folkestone in small groups	Rounders	
Wii dance competition	Softball	Beach trip		Basketball		Football	
	Park games	Badminton					
Supper							
Welcome BBQ party and games	Film and popcorn night	International quiz	Formal dinner	Pamper party	Cinema trip	Black and white dress themed disco	
				Basketball competition			



*'Absolutely fantastic! Met lots of new friends from all over the world. Hope to see you all next year!'*  
Hasan, Azerbaijan

### Global English programme

Reading Writing Speaking Listening Thinking

Projects Workshops Debates Trips

### Global Themes

**Society**  
UNESCO priorities  
The environment  
The economy  
Inter-cultural learning

**Pop Culture**  
Music and festivals  
Social media  
Art, film and comedy  
Lifestyles and fashion

**Values**  
The law  
Political engagement  
The role of religion  
Youth well-being



# Mini-MBA™

## Ages 15–17 years

22 hours per week  
Minimum English level: B2+

This programme is for students looking for an inspirational and ambitious course which gives them the perfect introduction to the exciting and productive world of business management and administration.

Our experienced and dedicated academic staff introduce the essentials of business management on this intensive two week course. Students may need to complete our English test before we confirm acceptance.

This course is ideal for committed students looking for a very different kind of summer course, who want to boost their CV and university application by completing this rigorous and challenging programme.

Also, for students considering studying business, finance, management, economics or accounting at A-level, IB or undergraduate level, the Mini-MBA™ provides an intensive and comprehensive introduction. Some work is completed out of class.

Mini-MBA™ students are integrated in the afternoon programme with students on our other Earlscliffe summer courses and the normal sports, cultural activities and excursion programme is offered, including a special visit to the Bank of England Museum.



*'Really fulfilling, both academically and socially.'*  
Quique, Spain



### Mini-MBA™ sample week

Saturday	Sunday	Monday	Tuesday	Capital Wednesday™	Thursday	Friday
Breakfast						
House games	<b>Leeds Castle and Bluewater</b>	Introduction to Management	Marketing	<b>London visit</b> Trip to The London Dungeon and exclusively for our Mini-MBA™ students, the Bank of England Museum	Entrepreneurship	Introduction to Management
<b>Lunch</b>		<b>Lunch</b>			<b>Lunch</b>	
<b>Ashford Designer Outlet trip</b>		Accounting	Entrepreneurship		Marketing	Organisations
		<b>Activity sessions</b>	<b>Activity sessions</b>		<b>Activity sessions</b>	<b>Activity sessions</b>
		Football	Golf		Visit Folkestone in small groups	Basketball
		Sandy beach trip	Softball			Badminton
		Arts and crafts	Volleyball			Arts and crafts
Supper						
Welcome BBQ and games	Jeux sans Frontières	Casino night	Formal dinner	Karaoke	Ten-pin bowling trip	Hawaiian disco night

#### The course outline

##### Unit 1: Introduction to Management

This unit forms the core of the course and provides students with the skills, vocabulary, knowledge, confidence and technique to analyse business issues, prepare projects, research company case studies and give presentations.

##### Unit 2: Accounting

This unit aims to provide an introduction to basic accounting knowledge for the financial statement analysis.

##### Unit 3: Entrepreneurship

This unit will include the concept of entrepreneurship and finding opportunities.

##### Unit 4: Organisations

We will look at the tradition of organisational development and how this has affected modern day leadership and management in business organisations.

##### Unit 5: Marketing

This unit will involve a mixture of lectures, discussions and short case studies for analysis in class to give you an insight into some of the issues and tools used in marketing for the 21st century.





# Uni-Prep

## Ages 16–17 years+



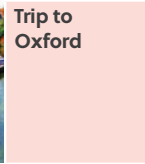

22 hours per week  
Minimum English level: B2+

The Uni-Prep course is for those aged 16–17+, who will soon be considering applying to universities either in the UK or their own countries.

This higher level, skills-based course is designed to focus on all the independent learning skills required of an ambitious undergraduate, and indeed to help some of our students seeking entry to the UK's best universities.

Our Earlscliffe admissions advisors have many years' experience in preparing international students for entry into some of the world's top institutions such as Oxford, Cambridge, Stanford, UCL, LSE, Imperial, Durham and St Andrew's.

### Uni-Prep sample week

Saturday	Sunday	Monday	Tuesday	Capital Wednesday™	Thursday	Friday		
Breakfast								
Park games	<b>Canterbury and boat tour</b>	Choosing universities	IELTS prep	<b>High speed train to London</b> The National Gallery	Public speaking	IELTS prep		
		Extended essay skills	Critical thinking		Extended essay work	Research skills		
Lunch								
<b>Trip to Folkestone</b>		Lunch			Lunch			
		Note-taking skills	Topical debate		UCAS Personal Statement guidance	The Oxbridge application process		
	<b>Trip to Oxford</b>		<b>Activity sessions</b>		<b>Activity sessions</b>	<b>Visit to Queen Mary University of London</b>		
							Beach trip	Visit Folkestone town centre in small groups
							Softball	
			Football					
Supper								
Welcome BBQ and games	Film and popcorn night	Formal dinner	'Minute to win it!'	International quiz	Laser tag trip	Masquerade disco		



*'Although I was only here for a few weeks the time was amazing and it has shaped me more than anything else I have done.'*  
**Corinna, Ukraine**

This two week course includes:

IELTS lessons and exam preparation

Research skills

Critical thinking

Essay writing skills

Completion of an extended essay on an academic topic of the student's choice

Note-taking skills

The Oxbridge entry procedure

Choosing appropriate UK universities and courses

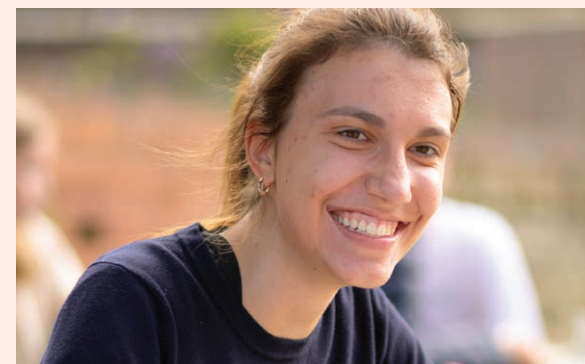
Personal Statement guidance for those considering applying to UK universities through the UCAS system

Visiting Oxford and a selected London university, e.g. Queen Mary, UCL, etc.

Public speaking skills

Taking part in our weekly debates

Delivering effective presentations



# Optional extras

Enhance your experience by choosing one or more of our optional extras which offer something for everyone, from paintball and theatre to the magic of Harry Potter...

## Paintball

### Summer only

Have fun in the forest, dodging your opponents and trying to plant the flag for your team (all safety equipment is provided and must be worn at all times).

## Musical Trip – Disney's 'The Lion King'™ in London's West End

### Summer only

Most will have seen the movie and be familiar with Elton John's music which makes the experience all the more fulfilling and easy to understand.

## Extra Intensive English

### Summer and Easter

Students at Earlscliffe may take advantage of our extra learning options – 4 hours per week or One-to-One – visit [summer.earlscliffe.co.uk](http://summer.earlscliffe.co.uk)

## Warner Bros Harry Potter™ Studios trip

### Summer only

For Harry Potter fans, why not enjoy a day out at this popular attraction to Warner Bros Studios?

You will be able to see many of the sets, props and costumes from the most successful film series of all time: the Great Hall; Dumbledore's office; the shops in Diagon Alley; Harry's Nimbus 2000 and Hagrid's motorcycle; the Gryffindor common room; Hagrid's hut and Professor Umbridge's office at the Ministry of Magic. Have a refreshing Butterbeer in the studio café to finish your magical afternoon!



*'You can regret a lot of things  
but you will never regret  
coming to Earlscliffe.'*  
*Tiziana, Switzerland*



# Earlscliffe Easter

## Ages 8–17 years

One or two week options available

Buy one week and get the second week half price

We have been running English language and activity programmes for all ages (8–17 years) in the Easter holiday period for many years.

### General English plus multi-activities

We offer twenty lessons per week (16 hours) with the morning classes focusing on the four skills of reading, writing, speaking and listening, and our afternoon sessions being more interactive project lessons involving drama, music, film, arts and crafts and even debating for the more advanced learners.

Given the unpredictable weather at this time of year, we do offer more trips and indoor sports on our programme than you would find in the summer. Given our traditional Easter special offer, we believe that this course offers fantastic value for money.

### Easter sample week

Saturday	Sunday	Monday	Tuesday	Capital Wednesday™	Thursday	Friday
Breakfast						
House games	<b>Canterbury and boat tour</b>	<b>English lessons</b>	<b>English lessons</b>	<b>London</b> The Science Museum and shopping in Covent Garden	<b>English lessons</b>	<b>English lessons</b>
<b>Lunch</b>		<b>Lunch</b>			<b>Lunch</b>	
Football		Active English	Active English		Active English	Active English
		<b>Activity sessions</b>	<b>Activity sessions</b>		Visit to Folkestone	<b>Activity sessions</b>
Badminton		Basketball	Laser Tag trip			Swimming
Park games		Arts and crafts			Football competition	Tennis
		Table tennis				Volleyball
Supper						
Welcome games and music	Film and popcorn night	Casino night	Karaoke	Cinema trip	Disco	Pool and table tennis competition

### Earlscliffe Easter

<b>Ages</b>	8–17 years
<b>Level of English</b>	Beginner to Advanced
<b>Length of course</b>	1–2 weeks
<b>Total number of students</b>	Maximum 100
<b>Lessons per week</b>	16 hours per week (20 lessons)
<b>Class size</b>	Maximum 12
<b>Accommodation</b>	All rooms have private bathrooms and are recently renovated; 2–3 students sharing per room
<b>Excursions</b>	Minimum 2 per week
<b>Extra options</b>	4 hours of English tuition in small groups or one-to-one tuition
<b>Airport transfers</b>	Transfers are included in the course fees for flights scheduled to arrive and depart between 9am–4pm*. Visit <a href="http://summer.earlscliffe.co.uk">summer.earlscliffe.co.uk</a> for out-of-hours and Unaccompanied Minor transfer prices
<b>Travel insurance</b>	Student travel insurance is included in the weekly price
<b>What's included</b>	All accommodation, meals, lessons, sports, activities and events, excursions including admissions costs, Wi-Fi, weekly laundry service, travel insurance, airport transfers, * Earlscliffe water bottle and T-shirt

\*visit [summer.earlscliffe.co.uk](http://summer.earlscliffe.co.uk) for details



*'It was a fun experience that I would totally repeat!'*  
Chiara, Italy



**Earlscliffe and facilities**

- 1 Main building and residence – 29 Shorncliffe Road
- 2 Residence – 47 Earls Avenue
- 3 Residence – 29 Westbourne Gardens
- 4 School House – 24 Grimston Gardens
- 5 Residence – 25 Grimston Gardens
- 6 Residence and classrooms – 26 Grimston Gardens
- 7 Creative Arts Studio - 11 Earls Avenue
- 8 Three Hills sports centre & astro pitches
- 9 Folkestone Sports Centre – tennis, gym and pool

**Folkestone landmarks**

- A Folkestone Central train station
- B Bouverie Place shopping centre
- C Folkestone Creative Quarter
- D Rocksalt restaurant & Harbour Arm
- E The Relish boutique B+B
- F The View hotel
- G Leas promenade
- H The Grand hotel

## The Earlscliffe campus

Earlscliffe is based in the resurgent seaside town of Folkestone in the county of Kent. Folkestone has a population of about 45,000 and is connected to London by a regular, high-speed (55 minutes direct) train service.

**The Leas**  
Earlscliffe is within a few minutes' walk of the elegant Leas promenade, virtually no different today from Victorian times. In 2014 HRH Prince Harry opened the Memorial Arch on the promenade to commemorate the town's role in the Great War of 1914–18.

**Creative Quarter**  
For our more inquisitive and curious students, Folkestone's 'Creative Quarter' offers a variety of galleries, cafés, restaurants and antique sellers. Folkestone's 'Triennial' has put the town firmly on the international art and sculpture calendar.

**Rocksalt restaurant and Harbour Arm**  
Mark Sargeant's 'Rocksalt' restaurant, positioned on the old harbour, has won many accolades in recent years. In 2016 the Harbour Arm was re-opened and is home to a variety of pop-up shops, stalls, bars and eateries at weekends.

**The town centre**  
Folkestone's town centre offers all the usual high street shops popular with teenagers, from Primark to Starbucks, as well as banks and pharmacists.

# Q&A

The Earlscliffe Summer Handbook will hopefully answer most questions you may have. Otherwise, please just call us on +44 (0)1303 253951.

**Q: How do I book?**

**A:** Online on our website at: [summer.earlscliffe.co.uk](http://summer.earlscliffe.co.uk). Places cannot be held without receipt of deposit.

**Q: How do I get to the school?**

**A:** We include an airport and Eurostar Ashford transfer service in the course fees for flights/trains scheduled to arrive and depart between 0900–1600hrs on published arrival/departure days.

**Q: Are there any extra costs?**

**A:** No, only if you choose to take any of the extra options, such as small group lessons, 1:1 English tuition, paintball, 'The Lion King™' musical or the Harry Potter Studios™ tour.

**Q: Who do I share a room with?**

**A:** We have single, twin and triple rooms. We always room students with someone of a similar age, but different native language. If you have a specific rooming request, e.g. two friends who would like to share or if you want a single room (limited availability and for an additional fee), this must be stated clearly on the Booking Form.

**Q: What is in my room?**

**A:** A bed, a bedside table, a wardrobe to store your clothes, a desk, a chair and an en-suite bathroom with WC, wash basin and shower.

**Q: Can I go to the town?**

**A:** We take you into nearby Folkestone twice a week where you will have free time to do some shopping and browsing with friends.

**Q: Do I get free time?**

**A:** We run a busy programme which includes some free time each day, yes.

**Q: Is there free Wi-Fi on campus?**

**A:** Yes, all our buildings have Wi-Fi throughout but 'phones are not allowed in class unless they are needed for project work. Student Wi-Fi is available from 06.00 to 12 midnight.

**Q: How long are the lessons?**

**A:** Lessons are generally 60–90 minutes long.

**Q: Who looks after me in the house?**

**A:** Our residential staff will supervise your stay with us in your house.

**Q: How close are the buildings to each other?**

**A:** Three of the buildings are next to each other, and the others are within a few minutes' walk of each other.

**Q: Will I have my washing done?**

**A:** Student laundry is done once a week. Bedding is provided but please bring your own towels.

Earlscliffe is part of Dukes Education – UKVI Tier 4 Sponsor Licence number: HYJBD6CB5. Dukes Education is a **family** of schools and educational services based in the UK. Our schools are **unique** in identity and style **yet united** in offering outstanding teaching and learning which provides the strongest of **foundations** for our young people to lead meaningful and fulfilling lives.

Earlscliffe is a trading name of Sussex Summer Schools Ltd. Earlscliffe (Sussex Summer Schools Ltd) is registered as an independent school with the Department for Education: school number 886/6138.

**Earlscliffe**  
**29 Shorncliffe Road, Folkestone**  
**CT20 2NB, United Kingdom**

**[www.earlscliffe.co.uk](http://www.earlscliffe.co.uk)**