



King's College London

Intensive English | IELTS Preparation

| Young Performers

Ages 13-16 | Ages 16-18



King's College London

University of London



Bucksmore
EDUCATION

Information Guide 2022

IN SCIE



Contents

King's College London, *pg. 3*

Intensive English, *pg. 7*

IELTS Preparation, *pg. 10*

Young Performers, *pg. 12*

Social Programme, *pg. 10*

More Information, *pg. 11*





King's College London

University of London • *Ages 13-16*

Courses

Intensive English, *Ages 13-16*

IELTS Preparation, *Ages 16-18*

Young Performers, *Ages 13-16*



The Strand campus of King's College London is the most central university campus in London. Classes, activities and meals take place on the Strand, adjacent to the famous Somerset House.



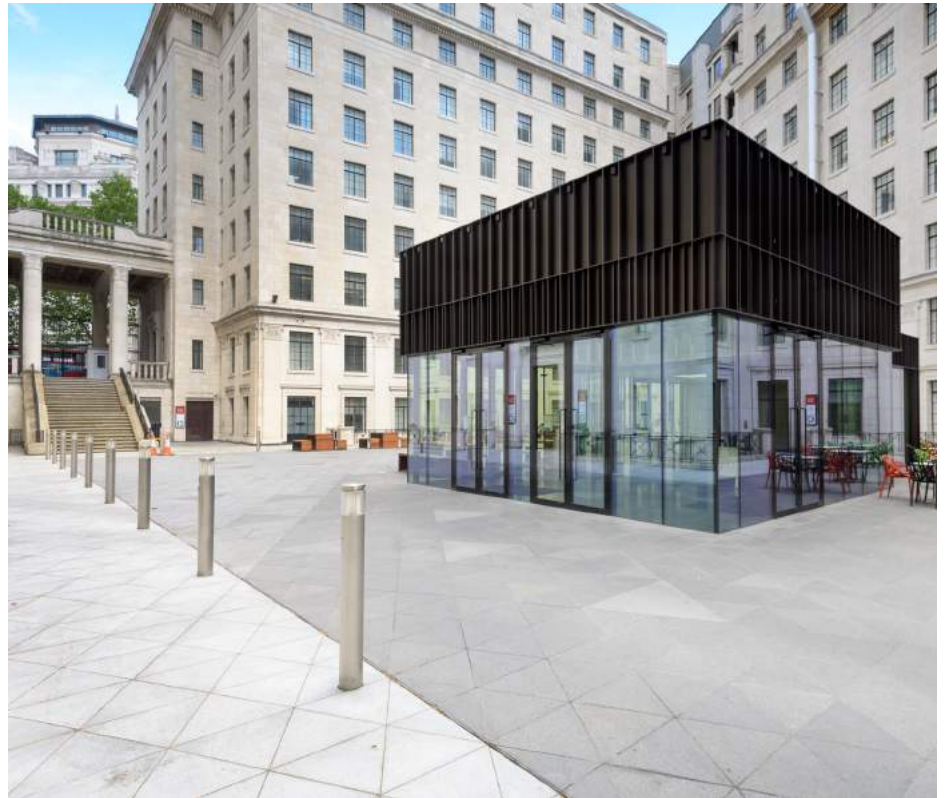


King's College London

University of London • *Ages 13-16*

Key Facts:

-  **Location:**
Main Campus: King's College London, Strand, London, WC2R 2LS
-  **Bedrooms:**
Single bedrooms. Separate male & female accommodation.
-  **Bathrooms:**
En-suite bathrooms
-  **Social Space:**
Student common areas
-  **Facilities:**
Auditorium, high-quality classrooms with smart boards and projectors
-  **Internet:**
Wi-Fi available throughout
-  **Security:**
No key deposit. Electronic key access.
-  **Airports:**
Heathrow LHR 1h 15min
Gatwick LGW 1h 30min
-  **What to Pack:**
Linen provided
-  **Laundry:**
Laundry available free-of-charge
-  **Meals:**
All meals included. Packed lunch on excursion days



Did you know?

King's College London (KCL) claims to be the third oldest university in England (after Oxford and Cambridge) as it was founded in 1829. However it's rival, University College London (UCL), claims also to be the third oldest as it was founded in 1826, despite receiving its Royal Charter after KCL.



“The small classes make learning easier and more interesting. The activities are fun, original and very diverse!”

MAUD, FRANCE





King's College London

University of London • Ages 13-16



Accommodation:

Student accommodation is provided at Dinwiddy House, a great zone 1 location just a few minutes' walk from King's Cross-St. Pancras International. All bedrooms are single en-suites.



Laundry:

Laundry is free and available on-site. Students must load and empty the laundry machines themselves (with Bucksmore staff guidance), though laundry detergent will be provided by Bucksmore.



Transfers:

Bucksmore offers a free airport transfer service for all students arriving and/or departing between 10:00-20:00 at:

London Heathrow (LHR)

London Gatwick (LGW)

London City (LCY)

St Pancras Intl Station (STP)

Students requesting private transfers outside of these destinations and times will be subject to additional charges.

Please see the transfer information page for more details.



Sample Menu:

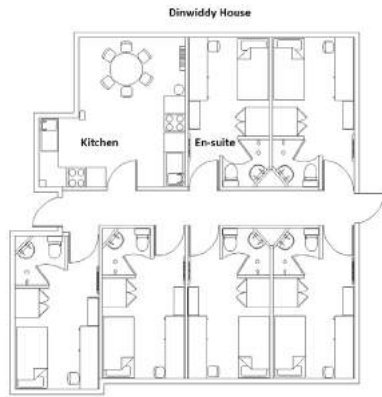
Tuesday	Wednesday	Thursday	Friday	Saturday	Sunday	Monday
Breakfast	Breakfast	Breakfast	Breakfast	Breakfast	Breakfast	Breakfast
Fruit Juice, Cereals Mini Bagels & Preserves, Pastries, Yogurt & Exotic Fruit Salad	Fruit Juice, Cereals Mini Bagels & Preserves, Pastries, Yogurt & Exotic Fruit Salad	Fruit Juice, Cereals Mini Bagels & Preserves, Pastries, Yogurt & Exotic Fruit Salad	Fruit Juice, Cereals Mini Bagels & Preserves, Pastries, Yogurt & Exotic Fruit Salad	Fruit Juice, Cereals Mini Bagels & Preserves, Pastries, Yogurt & Exotic Fruit Salad	Fruit Juice, Cereals Mini Bagels & Preserves, Pastries, Yogurt & Exotic Fruit Salad	Fruit Juice, Cereals Mini Bagels & Preserves, Pastries, Yogurt & Exotic Fruit Salad
Lunch	Lunch	Lunch	Lunch	Lunch	Lunch	Lunch
Roast Chicken Herb Roasted Seitan & Artichoke Caesar Salad	Baked Bream with Cori&er & Lemongrass Curry Sauce Chickpea & Coconut Curry	Sumac Baked Chicken Breast Spinach & Kale Falafel	Packed Lunch Excursion Day	Beef with Black Bean & Green Pepper Sauce Fried Tofu with Black Bean & Green Pepper Sauce	Breaded Cod Fillet with Chips, Mushy Peas & Tartare Sauce Mediterranean Vegetable Flatbread with Hummus	Chicken Katsu Curry Vegetable Katsu Curry
Served with Grated Egg, Parmesan, Croutons, Anchovies & Dressing	Served with Jasmine Rice & Cabbage Slaw Salad Bar	Served with Cauliflower Cous Cous & Butter Bean Salad Salad Bar		Served with Vegetable Fried Rice Salad Bar	Salad Bar	Served with Steamed Rice, Pickled Ginger, Sugar Snap & Pea Salad Bar
Vegan Brownie & Fresh Fruits	Gelato & Fresh Fruits	Wild Berry Cream Slice & Fresh Fruits		Jam/Vanilla Doughnuts & Fresh Fruits	Selection Of Muffins & Fresh Fruits	Banoffee Muffins Fresh Fruit Selection
Dinner	Dinner	Dinner	Dinner	Dinner	Dinner	Dinner
Quarter Pounder Cheese Beef Burger Beetroot, Goats Cheese & Butternut Burger	Beef Lasagna Macaroni Cheese with Sun Dried Tomatoes & Pesto	Baked Hake Fillet Stuffed Acorn Squash with Cauliflower Rice & Feta	Lemon & Black Pepper Chicken Courgette & Tomato Gratin with Sourdough Crumb	Chicken Kiev Vegetable Kiev	Beef & Tomato Meatballs Quorn & Tomato Stew	Smoked Haddock & Mozzarella Fish Cakes Red Cabbage, Red Onion & Brie Roulade
Served with Chips & Slaw Salad Bar	Served with Garlic Bread, Rocket & Parmesan Salad Salad Bar	Served with Ratatouille & New Potatoes Salad Bar	Served with Roasted Vegetable Cous Cous & Greens Salad Bar	Served with Buttered New Potatoes & Steamed Broccoli Salad Bar	Served with Penne & Garlic Flatbread Salad Bar	Served with Minted Peas & New Potatoes Salad Bar
Lemon Meringue Pie Fresh Fruit Selection	Crème Caramel Fresh Fruit Selection	Belgian Waffle with Banana, Whipped Cream & Chocolate Sauce Fresh Fruit Selection	Peanut Butter & Toffee Cheesecake with Cream Fresh Fruit Selection	Summer Pudding with Vanilla Cream Fresh Fruit Selection	Courgette & Avocado Cake, Summer Berry Compote Fresh Fruit Selection	Belgian Chocolate Cheese Cake Fresh Fruit Selection





King's College London

University of London • *Ages 13-16*



Accommodation

Located only a 3 minute walk from King's Cross station, Dinwiddy House provides excellent student accommodation. Students are accommodated in flats of 6-7 with one Bucksmore staff member in each flat. All rooms are single en-suite and have a shared kitchen facility for hot water and fridges. Dinwiddy is around a 25 minute walk or 17 minute bus ride to King's College.

World Class Teaching Facilities

King's College London is one of the world's leading universities, and Bucksmore students can take full advantage of the classrooms, seminar rooms and lecture theatres on offer.



Bush House

Since 2012 Bush House has been a key part of the Strand Campus of King's College London and now hosts many of Bucksmore's activities during summer. Previously, Bush House served as the headquarters of the BBC World Service for 70 years. Situated several floors high, the large room offers breathtaking views of the River Thames.

Central London Location

King's College London's Strand campus contains one wing of Somerset House (pictured above), and is located a short walking distance to many of London's most popular areas, such as Oxford Street, Covent Garden and London Bridge. A London travelcard is included in the course fees for travel around the city.



Intensive English

English language + culture summer school • *Ages 13-16*

Key Facts:

-  **Dates:**
5 July - 2 August
-  **Age range:**
13-16
-  **Hours per week:**
25 hours of tuition per week
-  **Class size:**
Maximum class size of 11 students
-  **Minimum language level:**
No minimum level required
-  **Weekly excursions:**
One full-day excursion outside of London every week & daily excursions around the city
-  **Merchandise:**
Bucksmore branded backpack, water bottle, lanyard & student card for all students
-  **Cohort size:**
Between 50-60 students (expected)
-  **Certificate:**
All students receive a personalised certificate & report card upon graduation



Located in the centre of England's capital city, Bucksmore London is an intensive English language summer programme combined with unparalleled opportunities to see many of London's most famous landmarks and attractions. Taking place at King's College London enables students to learn key English skills on a top university campus.

Sample timetable:

	TUE	WED	THU	FRI	SAT	SUN	MON
AM 09:00-13:00	Arrivals	Placement Testing Course Overview Assessment Introduction	Main Syllabus Excursion Link Lesson Conversation Class	Excursion: Thorpe Park	Main Syllabus Academic Skills Conversation Class	Main Syllabus Academic Skills Conversation Class	Main Syllabus Academic Skills Session Review Weekly Review
PM 14:00-18:30	Arrivals	Activity: Central London Walking Tour	Project Preparation		Elective	Activity: Camden Market	Activity: St Paul's Cathedral
EVE 19:30-21:30	Welcome Games	Activity: London Eye	Activity: West End Show		Project Presentations		



Intensive English

English language + culture summer school • *Ages 13-16*



Course information

Bucksmore London provides students with 25 hours of English per week, in a maximum class size of 11 students.

The academic programme is taught through a combination of general English tuition, project sessions, academic English and 'London experience' lessons.

A strong emphasis will be placed on London's culture, historic landmarks and attractions - both in lessons and after classes.

The London Experience

London experience lessons bring London to life in the classroom and provide students with functional language and vocabulary to use in their daily life during their stay at Bucksmore London.

These lessons link specifically to famous sights in London such as the London Eye, Canary Wharf and Kensington. Ordering a curry at a restaurant on Brick Lane or bargaining with a street seller in Camden Market are real life situations incorporated into the London experience lessons.



Intensive English

English language + culture summer school • *Ages 13-16*

English Language Syllabus

The six-tier syllabus is suitable for all levels from beginner through to proficient. The syllabus combines language study and language in use to offer a variety of lesson types with the main focus on developing communication skills.

The general English course aims to:

- Build language skills and confidence gradually through our multi-level syllabus.
- Help students achieve individual goals in language learning.
- Gain a better understanding of English books, films, songs, the internet & media.
- Provide students with opportunity to practice and improve their communicative English

Projects

Project sessions at Bucksmore London promote group work and co-operation, in order to allow participation across all levels of English. Popular sessions include 'Bucksmore President', 'Gaming Expo' and 'Bucksmore News'.

The aims of project work are to encourage collaboration and communication through the completion of real-world tasks that use English with an authentic purpose.

Students receive vocabulary and grammar input in the first part of the project session, and are then placed into groups. Groups are provided with a project guideline which they should follow and aim to complete in the preparation session.

The weekly project culminates in a presentation evening in which groups display and present their work.

Academic Skills Sessions

The academic skills sessions give students an introduction to exam techniques and are intended to help students improve the skills of academic reading, writing, listening and speaking. These sessions take place over three hours each week and culminate with students taking the Bucksmore Assessment.

The variety of lessons and teaching material provide students with a stimulating and comprehensive learning experience throughout their stay at Bucksmore London.

Bucksmore Assessment

Assessing a learner's skills in reading, writing, speaking and listening, the Bucksmore Assessment helps to improve opportunities for study and travel, and provides a more rounded evaluation of a student's English ability.

The Bucksmore Assessment provides more relevant and appropriate language so learners are motivated to perform better than other, more adult-focused, exams.

Taken at the end of the course, the assessment is designed to complement the CEFR (Common European Framework of Reference) and to provide learners with a realistic determination of their English ability.

It can be applied against other international English exams such as London ESOL & IELTS.



Students will leave the course with a certificate of recommended English level measured against the CEFR scale.



IELTS Preparation

Exam preparation course for students taking the IELTS exam • *Ages 16-18*

Key Facts:

-  **Dates:**
5 July - 2 August
-  **Age range:**
16-18
-  **Hours per week:**
25 hours of tuition per week
-  **Class size:**
Maximum class size of 11 students
-  **Minimum language level:**
B1 level of English required
-  **Weekly excursions:**
One full-day excursion outside of London every week & daily excursions around the city
-  **Merchandise:**
Bucksmore branded backpack, water bottle, lanyard & student card for all students
-  **Cohort size:**
Between 20-30 students (expected)
-  **Certificate:**
All students receive a personalised certificate & report card upon graduation



Located in the centre of England's capital city, the IELTS Preparation course combines Bucksmore's Intensive English syllabus with exam preparation tuition. The combination of tuition across all areas of English language with lessons specifically tailored to IELTS exam technique, exam style questions and time management gives students powerful tools to take the exam with confidence.

Sample timetable:

	TUE	WED	THU	FRI	SAT	SUN	MON
AM 09:00-13:00	Arrivals	Placement Testing Course Overview Assessment Introduction	Main Syllabus Excursion Link Lesson Conversation Class	Excursion: Thorpe Park	Main Syllabus Academic Skills Conversation Class	Main Syllabus Academic Skills Conversation Class	Main Syllabus Academic Skills Session Weekly Review
PM 14:00-18:30	Arrivals	Activity: Central London Walking Tour	IELTS Preparation		IELTS Preparation	Activity: Camden Market	Activity: St Paul's Cathedral
EVE 19:30-21:30	Welcome Games	Activity: London Eye	Activity: West End Show		IELTS Preparation	Activity: Sports	Activity: Graduation Ceremony & Party



IELTS Preparation

Exam preparation course for students taking the IELTS exam • *Ages 16–18*



English Language Syllabus

The six-tier syllabus is suitable for all levels from beginner through to proficient. The syllabus combines language study and language in use to offer a variety of lesson types with the main focus on developing communication skills.

The general English course aims to:

- Build language skills and confidence gradually through our multi-level syllabus.
- Help students achieve individual goals in language learning.
- Gain a better understanding of English books, films, songs, the internet & media.
- Provide students with opportunity to practice and improve their communicative English

IELTS Preparation

The exam preparation sessions promote a firm understanding of how to apply English language knowledge to the IELTS exam context.

The aims of the sessions are to introduce and familiarise students with specific IELTS exam technique and the style of questions included so they feel prepared to take the exam in confidence.

Students receive an introduction to a specific area of the exam (reading, writing, listening etc) in the first part of the session, and then study the techniques and skills required for that area. The exam style questions included throughout the sessions help to re-inforce the learning and recall of English language and how to apply it to questions.

The ultimate aim of these sessions is to give students all the necessary tools for taking the IELTS exam to the best of their ability.

For an additional fee, Bucksmore can assist in booking a student's IELTS exam at the end of their course, to be taken in London.

Academic Skills Sessions

The academic skills sessions give students an introduction to general exam techniques and are intended to help students improve the skills of academic reading, writing, listening and speaking. These sessions take place over three hours each week and culminate with students taking the Bucksmore Assessment.

The variety of lessons and teaching material provide students with a stimulating and comprehensive learning experience throughout their stay at Bucksmore London.

Bucksmore Assessment

Assessing a learner's skills in reading, writing, speaking and listening, the Bucksmore Assessment helps to improve opportunities for study and travel, and provides a more rounded evaluation of a student's English ability.

The Bucksmore Assessment provides more relevant and appropriate language so learners are motivated to perform better than other, more adult-focused, exams.

Taken at the end of the course, the assessment is designed to complement the CEFR (Common European Framework of Reference) and to provide learners with a realistic determination of their English ability.


It can be applied against other international English exams such as London ESOL & IELTS which will give students an idea of their level and a areas to focus on further in order to be ready for their IELTS exam.

Students will leave the course with a certificate of recommended English level measured against the CEFR scale.

Young Performers

Introduction to careers in the performing arts industry • *Ages 13-16*

Key Facts:

-  **Dates:**
5 July - 2 August
-  **Age range:**
13-16
-  **Hours per week:**
25 hours of tuition per week
-  **Class size:**
Maximum class size of 11 students
-  **Minimum language level:**
B1 level of English required
-  **Weekly excursions:**
One full-day excursion outside of London every week & daily excursions around the city
-  **Merchandise:**
Bucksmore branded backpack, water bottle, lanyard & student card for all students
-  **Cohort size:**
Between 20-30 students (expected)
-  **Certificate:**
All students receive a personalised certificate & report card upon graduation



Located in the centre of England's capital city, Young Performers gives students the opportunity to train like a West End professional with London theatre workshops covering audition techniques, musical choreography and bringing a script to life. Students will train with real West End performers and learn more about world famous West End theatre.

Sample timetable:

	TUE	WED (IN LONDON)	THU (IN LONDON)	FRI	SAT	SAT (IN LONDON)	MON
AM 09.00 - 13.00	Arrivals	Intro to the Course Singing Workshop	Acting Workshop Dance Workshop	Full-Day Excursion: Cambridge	Stage Combat Workshop	Acting Workshop Singing Workshop	Dance Workshop Acting Workshop
PM 14.00 - 18.30	Arrivals	Activity: Central London Walking Tour	Project Introduction & Preparation			London Excursion: London Eye & Covent Garden	Dance Workshop Singing Workshop
EVE 20.00 - 21.30	Welcome Games & BBQ	Activity: Sports	Theatre Visit: Matilda	Activity: Quiz Night	Activity: Film Night	Project Presentations	Graduation Ceremony & Party

Young Performers

Introduction to careers in the performing arts industry • Ages 13–16



Best course for...

Students interested in pursuing a career in the arts, those with a passion for acting and screen writing, as well as those looking to improve their expressive skills and confidence.

Expert Tutors

- Students receive tuition from West End On Demand's own theatre professionals

Workshop Content

- Script work and drama exercises
- Choreography straight from West End shows
- Ensemble Skills and teamwork
- Exercises to boost confidence and creativity

Theatre Behind the Scenes

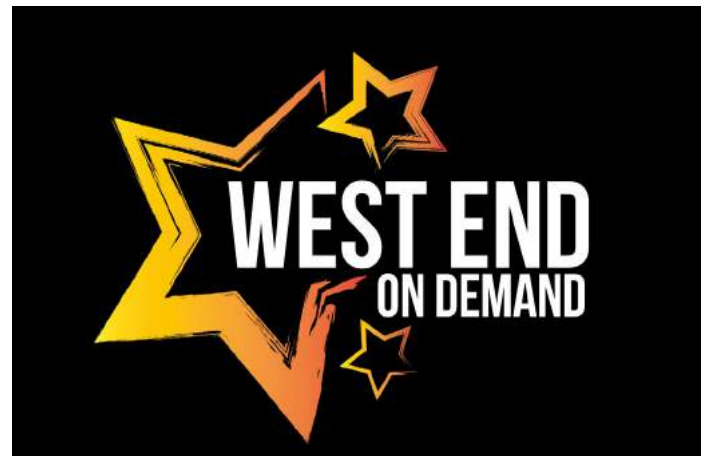
- Students receive the opportunity to perform on a West End stage during workshops
- Go behind the scenes of a London theatre and understand the different moving parts required in a major theatre production

Transport

- Students will travel around London and to the theatre by train and underground accompanied by a Bucksmore member of staff.



In partnership with:



West End On Demand

Founded by West End actress Rachel Bingham in 2009, West End On Demand brings theatre professionals to our classrooms! The aim of the course is to encourage confidence and creativity in students through a variety of performance based workshops.

Each workshop run by West End On Demand focuses on a specific area of performance including singing, dancing and acting that will help to encourage confidence in students' spoken English and improve their understanding of the language.

Not only do these workshops give students an insight into the physical act of performance, but they also have the opportunity to speak to and learn from real life West End performers. Plus, the workshops themselves are based on famous productions that the tutors have performed in for some time, giving an additional insight opportunity to the course.



King's College London

University of London • *Ages 13-16*

Social Programme Overview

We organise at least seven visits to London attractions over a two-week stay, plus one excursion to another destination in the UK per week.

To enable us to respond to student feedback and requests, the excursions at these destinations are planned and organised by a dedicated Activity Manager. For this reason, it is impossible to provide exact weekly timetables until a few days before the start of the following week. This enables the Activity Manager to minimize any repetition and give students a unique experience every week.

Sample social programme activities and destinations include:



Politics and Royalty Tour

All students take this central London walking tour, visiting historic landmarks such as Buckingham Palace, Trafalgar Square, Horse Guards Parade, 10 Downing Street, Big Ben and the Houses of Parliament.



London Eye and River Cruise

Two fantastic ways of seeing London are either by above on the world-famous London Eye, or by boat on a Thames river cruise tour.



Museums and Galleries

London has a wonderful selection of museums and art galleries across the city, such as the British Museum, British Library, Natural History Museum (pictured), National Gallery, the Tate Modern and Saatchi Gallery.



Landmarks

Students visit a variety of well-known landmarks across the city, such as Tower of London (pictured), Kensington Palace, Piccadilly Circus and St Paul's Cathedral.



Attractions

An important part of the student social programme is to have fun! Visits to major attractions can include Madame Tussauds, London Zoo, London Dungeons, Namco Funscape and Ripley's 'Believe it or Not'.



Full-Day Excursions

One day per week will see the students leaving London entirely. Previous destinations have included: Thorpe Park, Oxford, Cambridge and Brighton.



More Information

Visit our website, bucksmore.com

- View more photos, videos and testimonials
- Check availability on your chosen summer course(s)
- Discover more information on course content
- Submit an application to one of our summer schools

Follow us

 /bucksmore

 @bucksmore

 /bucksmoresummer

Contact us

 info@bucksmore.com

 +44 (0) 2083 128 060

Bucksmore Education, 4th Floor, Nova South, 160 Victoria Street, London, SW1E 5LB, United Kingdom

Awards & Accreditations

Accredited by the

for the teaching
of English in the UK



Bucksmore
EDUCATION

www.bucksmore.com



IN SCIE