

MORE THAN ENGLISH[©]

International Summer School

2023



Creating Educational Experiences
That Change Lives and The World.

Experience More, Become More![©]





The most personalized summer school in the UK

School Founders, Claire Norwood & David Meddows are always there for your child

Programme:

Subjects 15 hours a week

Specialisms 10 hours a week

Social 20+ hours a week

MORE THAN ENGLISH

Subjects, Specialisms, Social included



Subjects

English Foundation

English Language

Academic Enrichment

- Global Leadership
- Business & Entrepreneurship
- Advanced English

What's your learning objective?

- Confidence
- Academic Skills
- Subject Knowledge

✓ Included in the price

15 hours a week

Choose **one** Subject for your whole stay



[Read more](#)



Specialisms

[Read more](#)

Active

Dance

Theatre

Film Making

Outdoor Leadership
& Survival

Pro Sports

Golf

Tennis

Football

Basketball



Academic

University Preparation

Creative Writing

✓ Included in the price

10 hours a week

Option 1: do your favourite Specialism every week

Option 2: do a different Specialism every week (any category)



Social: Late afternoons & evenings
(after Specialisms)

✓ Included in the price

20+ hours per week of Club Time Activities and Evening Events

Social: Club Time

✓ Included in the price



Volleyball, tennis, swimming, badminton, rounders



Archery, golf, cricket



'The Game', Cardio Tennis, unihockey, rounders



Jewellery making, T-shirt prints, art and crafts



Forest walks

[Read more](#)

Evening Events

Included in the price



Evening events



CINEMA, BOWLING



STUDENT
PERFORMANCES,
VISITING SPEAKERS



DISCOS, LIP SYNC,
VARIETY SHOW



MOCKTAILS NIGHT,
QUIZ NIGHT,
INTERNATIONAL NIGHT



CAMPFIRE &
MARSHMALLOWS, BBQ

[Read more](#)



Excursions

✓ Included in the price

Included

1 full-day excursion a week
2 half-day excursions a week

Optional extra excursions:

Harry Potter Warner Bros. Studio
Paintball
London Weekend (2 extra nights)





Bath



Birmingham



Harry Potter



London



Oxford



Liverpool

[Read more](#)

Weekly Timetable



	Sat	Sun	Mon	Tues	Weds	Thurs	Fri
Morning 0850-1220	Half-day excursion Ludlow*	Subjects	Subjects	Subjects	Full-day excursion Example: Oxford or Liverpool	Subjects	Subjects
Lunch 1220-1315							
Early afternoon 1315-1600	Arrival & Departure Day +Extra Adventures Harry Potter / Jungle Paintball	Half-day excursion Example: Shrewsbury	Specialisms	Specialisms		Specialisms	Specialisms
			House Time 1600-1700				
Later afternoon 1700-1800			Social & Activities	Social & Activities		Social & Activities	Social & Activities
Dinner & Relax Time 1800-1930							
Evenings 1930-2115	Social & Activities	Social & Activities	Social & Activities	Social & Activities		Social & Activities	Social & Activities
House Time 2115-2215							
Lights out 2230							

*In their departure week, students have 1 half-day excursion



Student care & happiness

By helping students to connect, we give them the confidence to step outside their comfort zone and embrace new challenges.

**MORE THAN
ENGLISH**

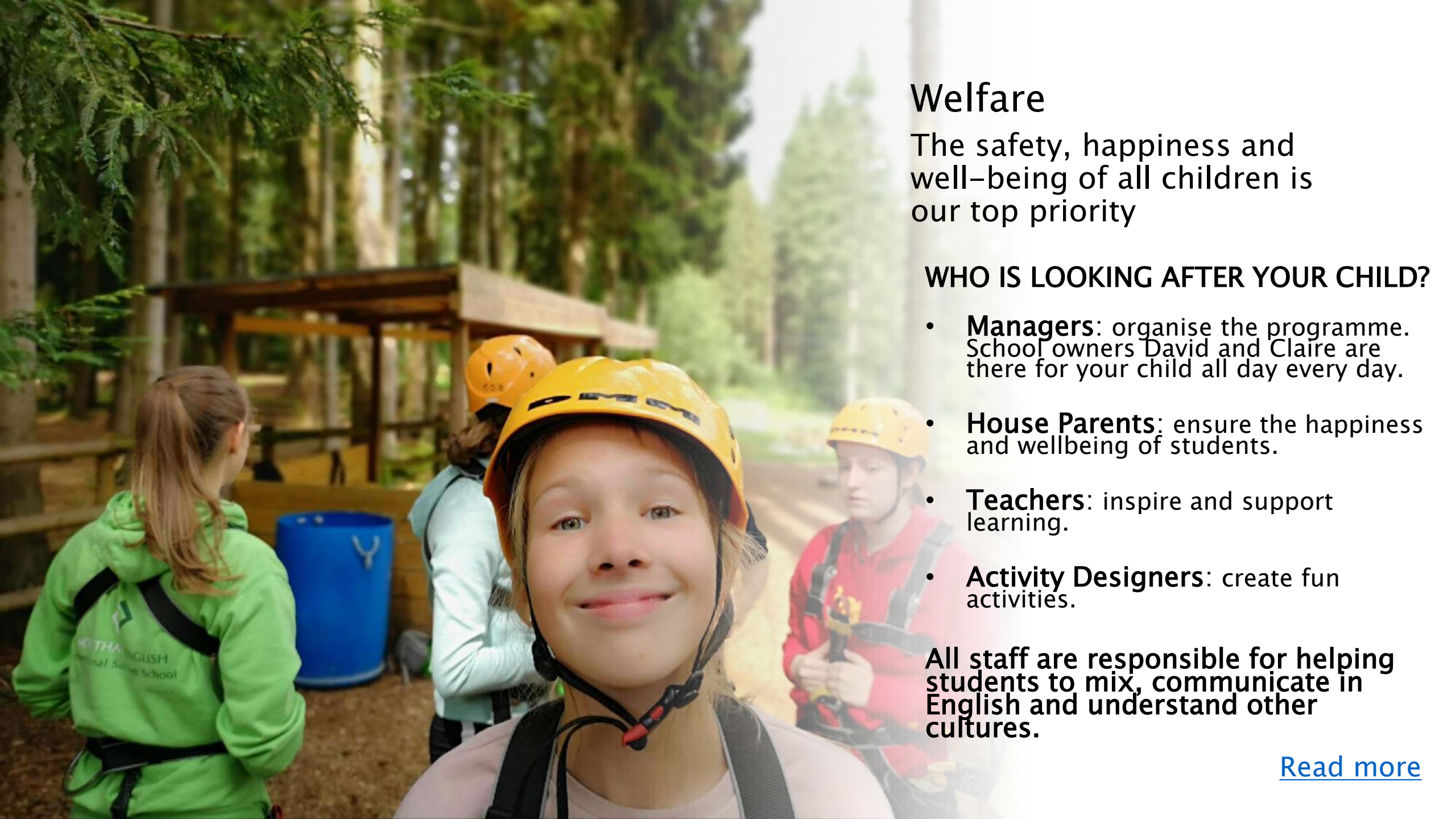
A group of young women are hugging each other in front of a brick building. The woman in the foreground is wearing a yellow shirt and has a pink scrunchie on her wrist. The background shows a brick building with windows and a doorway.

Building connections:

We bring students closer together by putting **positive values** at the centre of our programme throughout the day:

- Looking out for each other
- Inclusivity
- Intercultural Awareness and the value of International friendship

We also help students connect with our system of 'House Teams' and by only accepting individuals (no school groups)



Welfare

The safety, happiness and well-being of all children is our top priority

WHO IS LOOKING AFTER YOUR CHILD?

- **Managers:** organise the programme. School owners David and Claire are there for your child all day every day.
- **House Parents:** ensure the happiness and wellbeing of students.
- **Teachers:** inspire and support learning.
- **Activity Designers:** create fun activities.

All staff are responsible for helping students to mix, communicate in English and understand other cultures.

[Read more](#)



ACCOMMODATION

- Our comfortable, spacious accommodation is on campus
- For more English practice, students share a room with students the same age from other countries
- Our team of House Parents supervise 24 hours a day, 7 days a week



4-6 students in a room
4 meals a day
3 dining rooms





Fresh food

Prepared on campus using fresh ingredients by our professional catering team.

Special diets catered for:

- ✓ Gluten free
- ✓ Vegan
- ✓ Vegetarian
- ✓ Dairy free



The campus





• School and campus:

- 20 hectares of private landscaped grounds
- Full sports facilities including swimming pool, tennis courts and golf course
- Spacious, comfortable, shared accommodation

The campus is 5 minutes away from medieval Ludlow by car

[Read more](#)



Ludlow

Location



Birmingham Airport
1 hour 30 minutes



London Heathrow Airport
2 hours 41 minutes





Ludlow

F  **d**
Festival

Ludlow: the perfect place for a safe adventure

All students have the opportunity to climb the castle tower and go shopping in the medieval streets. The river is the perfect place to enjoy an ice-cream.

[Read more](#)



School staff at the airport

More Than English Staff will be waiting for your child at arrivals wearing a **green t-shirt** and holding a **green More Than English sign**.

Parent arrivals:

Most children travel to summer school alone. However, some parents choose to fly to England with their children, and either drive a hire car to the campus or rendezvous with school coaches at the airport.



Free Airport coach transfers:

- London Heathrow included
- Birmingham International included

Offered if arriving on flights

- arriving 1100–1600 hrs
- departing on flights 1200–1700 hrs



One inclusive price

- ✓ **Subjects** 15 hours a week
- ✓ **Specialisms** 10 hours a week
- ✓ **Social** Activities & Excursions
- ✓ All meals
- ✓ Accommodation on campus
- ✓ 24/7 care & supervision
- ✓ Insurance (Medical & Personal Belongings)
- ✓ Airport transfers

[Read more](#)

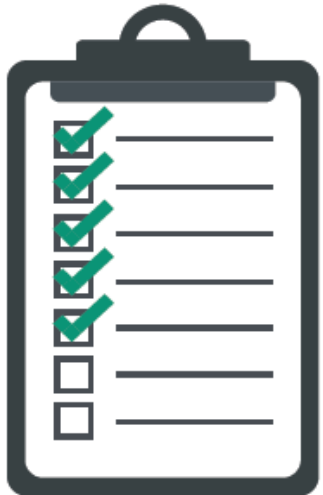
Dates & Prices 2023

Subjects		Dates	Price
English Foundation + Specialisms			
English Language	(2 wks)	July 8 – July 22 / July 22 – August 5	£3100
Ages 12-14 (A2-B1)	(3 wks)	July 8 – July 29	£4650
	(4 wks)	July 8 – August 5	£6200
Academic Enrichment + Specialisms			
Advanced English	(2 wks)	July 8 – July 22 / July 22 – August 5	£3100
Ages 13-17 (B2-C1)	(3 wks)	July 8 – July 29	£4650
	(4 wks)	July 8 – August 5	£6200
<hr/>			
Business & Entrepreneurship	(2 wks)	July 8 – July 22 / July 22 – August 5	£3100
Ages 14-17 (B2-C2)			
<hr/>			
Global Leadership	(2 wks)	July 8 – July 22 / July 22 – August 5	£3100
Ages 14-17 (B2-C2)	(3 wks)	July 8 – July 29	£4650
	(4 wks)	July 8 – August 5	£6200

[Read more](#)

How to book

We accept bookings through our Website or from authorized Agencies

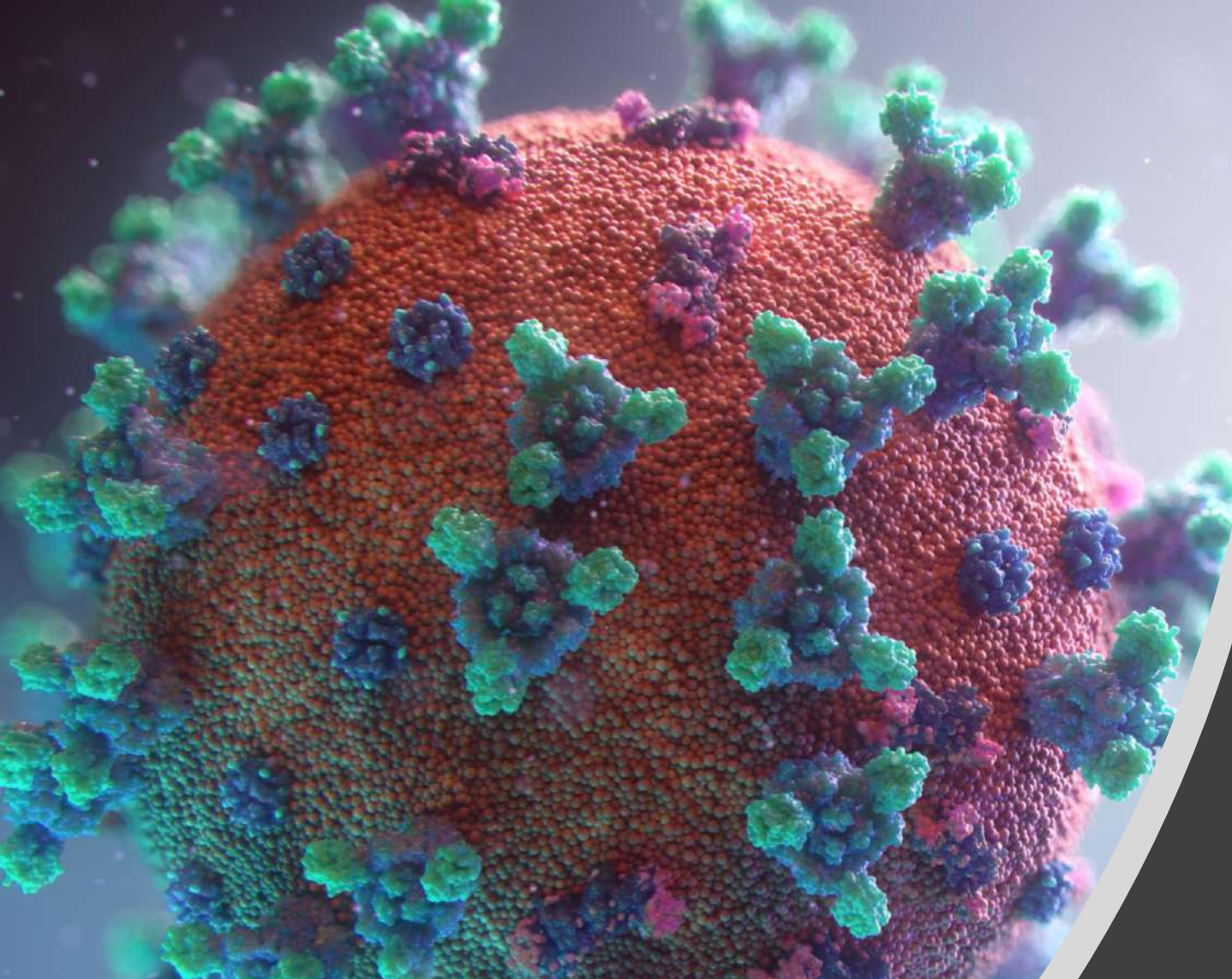


IT'S EASY TO BOOK

1. Go to www.morethanenglish.co.uk
2. Fill in the Online Booking Form to choose your child's Subject, Specialisms and excursion options
3. We send the course confirmation with an invoice by email
4. You pay the full amount or deposit
5. We sent the Oxford English Test for your child

Design your perfect course





As of March 18, 2022:

There are no travel restrictions to the UK. You **do not need** to complete a UK passenger locator form before you travel, take any COVID-19 tests or quarantine when you arrive in England.

Book with confidence

£600 deposit only

Cancel for **any reason** on or before April 30, 2023 and get a full refund

Cancel between May 1 and May 30, 2023 and lose your deposit (£600) only

Get a full refund even after May 31, 2023 if you cannot travel legally because of a new Covid-19 variant, for example, if there is a lockdown in your city on your day of departure

Please note:

No refund is available on or after May 31 if you are **disinclined** to travel.

We include Personal Accident & Travel Insurance for every student

(please read [Terms and Conditions](#))

Questions?

School Owners David & Claire are here to help you.



[Book a video consultation](#) with David & Claire



Ask a question using **Whatsapp**:

Claire: +44 77 549 23 944

David: +44 75 956 36 575



Email us: claire.norwood@morethanenglish.co.uk
david.meddows@morethanenglish.co.uk



More Than English's UK campus is accredited at Premier Status by Accreditation Service for International Colleges (ASIC) for its commendable areas of operation.

We take our responsibility to the planet seriously

In partnership with Ecologi we are:

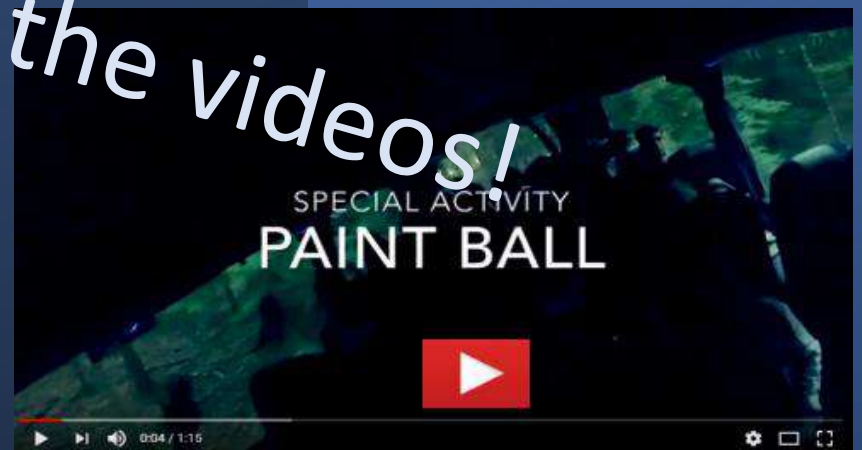
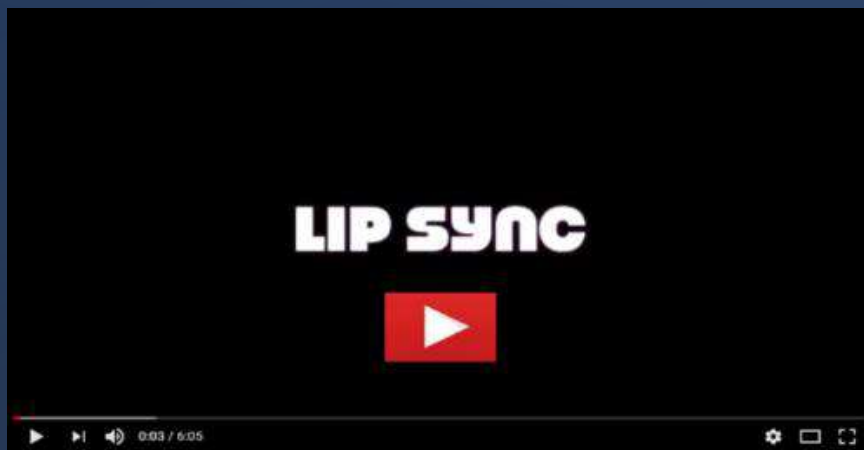
- Offsetting carbon emissions from students' flights
- Offsetting carbon emissions produced by our staff
- Supporting reforestation and carbon offsetting projects



Ecologi

Read [more](#) about More Than English's partnership with

<https://ecologi.com/morethanenglish>



Click on the videos!

Experience More, Become More!®

www.morethanenglish.co.uk



Ecologi

